

MONTHLY MEMBERSHIP PROGRESS REPORT

District 325 H

Results as of: 5/31/2026

GMT:

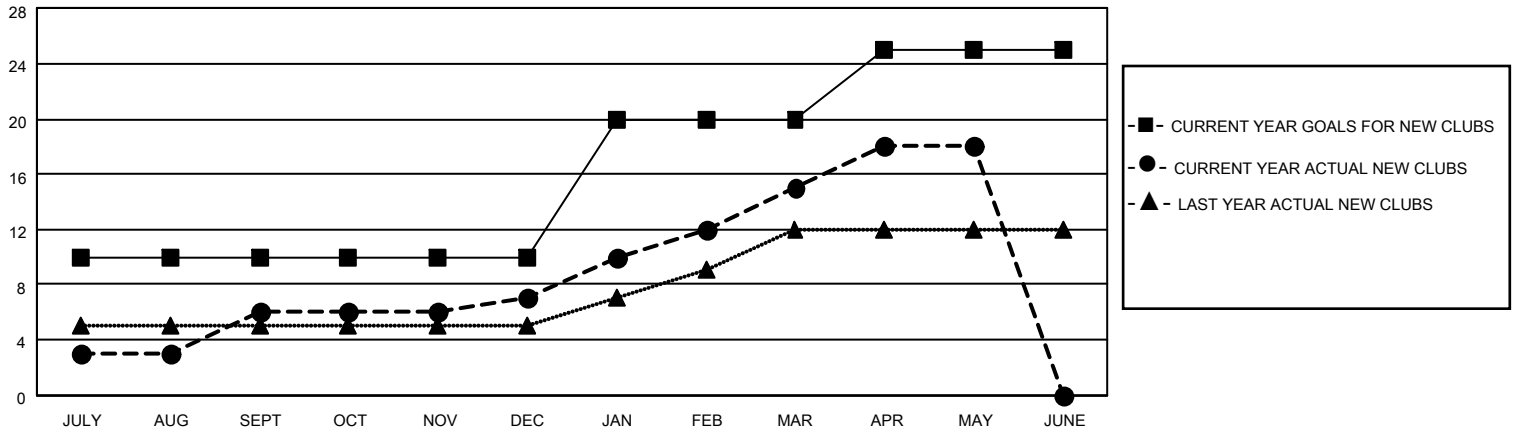
LOCATION NEPAL

GMT CA

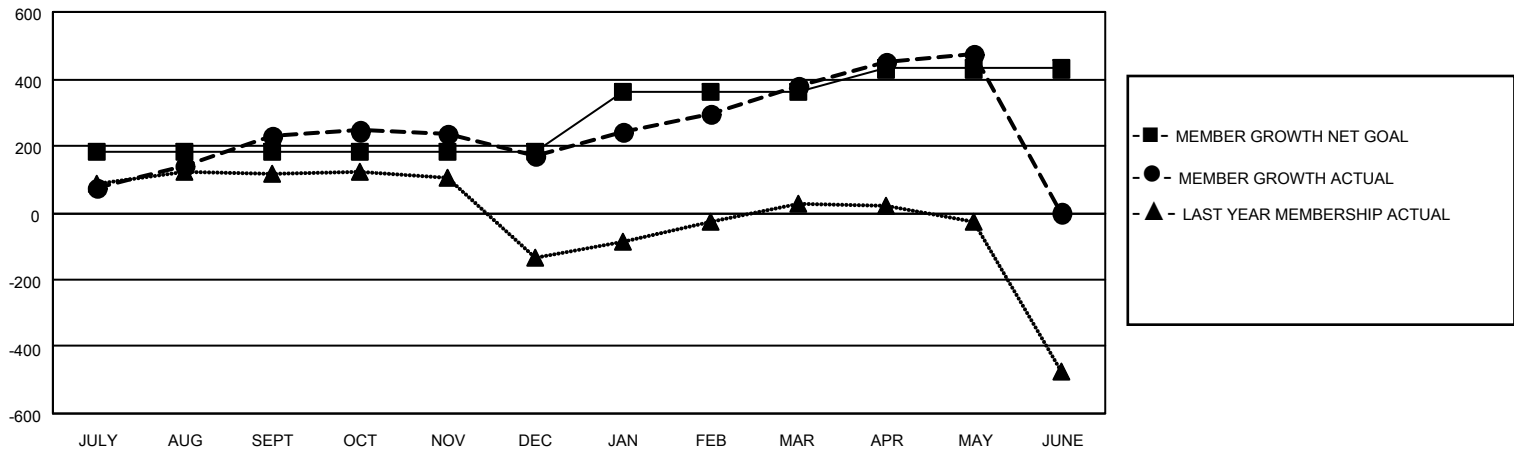
Clubs			
RESULTS FOR 2025-2026			
QUARTER	NEW CLUB GOAL	NEW CLUBS	DROPPED CLUBS
JULY/AUG/SEPT	10	6	0
OCT/NOV/DEC	0	1	0
JAN/FEB/MAR	10	8	0
APR/MAY/JUNE	5	3	0

Members			
RESULTS FOR 2025-2026			
QUARTER	MEMBER GROWTH NET GOAL	MEMBER GROWTH ACTUAL	DROPPED MEMBERS ACTUAL (including transfers)
JULY/AUG/SEPT	180	295	27
OCT/NOV/DEC	0	96	151
JAN/FEB/MAR	180	240	20
APR/MAY/JUNE	70	159	45

GOALS AND ACTUAL NEW CLUBS CUMULATIVE



GOALS AND ACTUAL MEMBERS CUMULATIVE



DROPPED CLUBS: 0 DROPPED MEMBERS DECEASED 0 CLUB CANCELLED 0 OTHER 239 TOTAL 239	72 CLUBS OF 131 ADDED 1 OR MORE NEW MEMBERS	GENDER DISTRIBUTION MALE 1,829 (65.98%) FEMALE 942 (33.98%)
	CLICK HERE FOR CUMULATIVE MEMBERSHIP DATA	TOTAL FAMILY UNIT MEMBERS 463 FAMILY MEMBERS PAYING HALF DUES 271